

# CERTIFICATE OF LOCATION OF GOVERNMENT CORNER

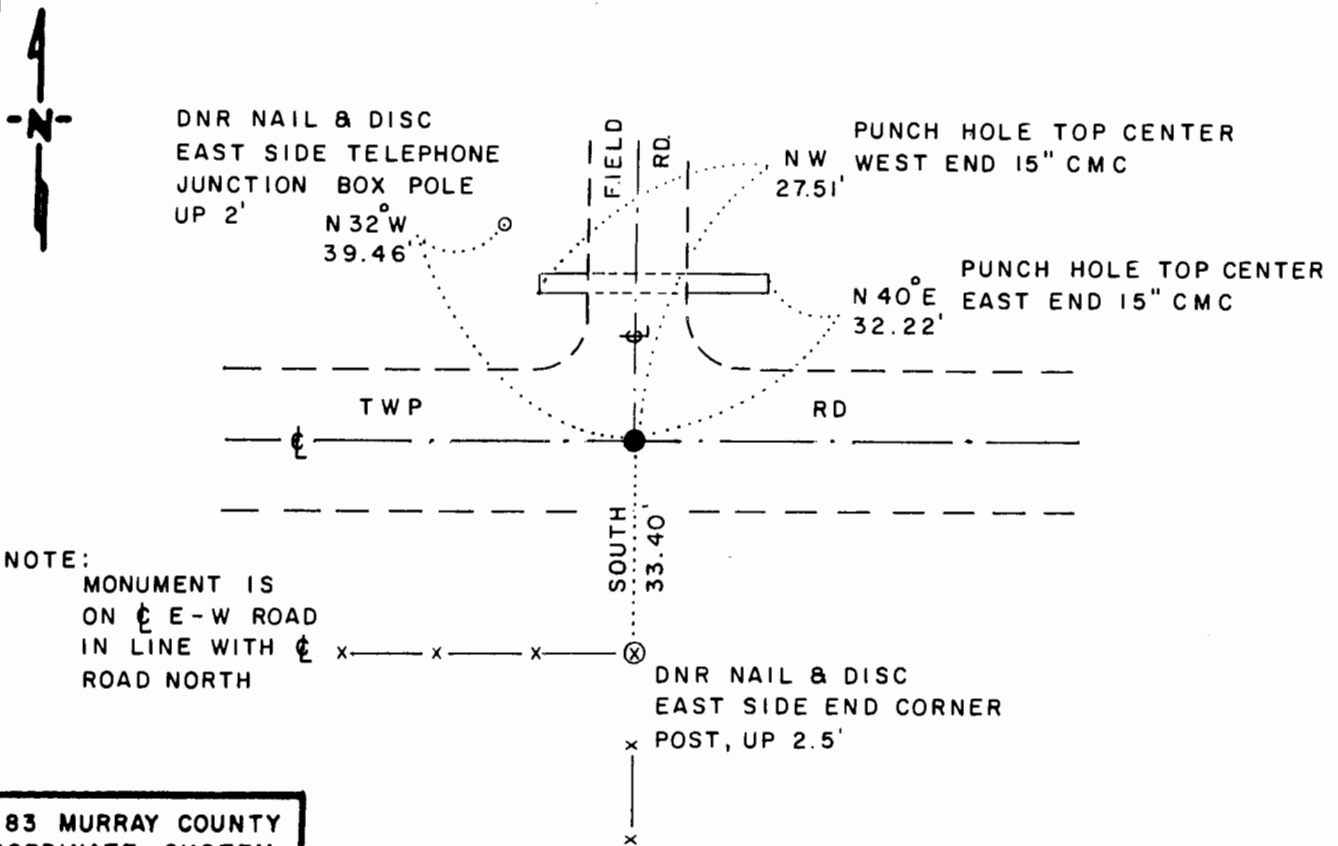
NORTH QUARTER Corner of Section 7, Township 107 N, Range 39 W, 5<sup>th</sup> P.M.

STATE OF MINNESOTA, County of MURRAY

At the corner location shown on the sketch

- On \_\_\_\_\_ found a \_\_\_\_\_  
DATE
- left monument as found,  lowered monument,  removed monument (explain)
- On 10-9-91 placed a 3/4" x 24" REBAR WITH ALUMINUM CAP  
DATE STAMPED "DNR SURVEY MARKER", DOWN 0.20'

### SKETCH OF REFERENCE TIES



**NOTE:**

MONUMENT IS ON  $\epsilon$  E-W ROAD IN LINE WITH  $\epsilon$  ROAD NORTH

DNR NAIL & DISC EAST SIDE END CORNER POST, UP 2.5'

1983 MURRAY COUNTY COORDINATE SYSTEM  
N = 189,891.740  
E = 550,850.221

BEARINGS OBSERVED WITH COMPASS

Statement of evidence relative to this corner location is on back of page

J.B.M. 11-20-91  
WMA 00065.00.00.01

I hereby certify that this document and the data contained herein was prepared by me or under my direct supervision.

Bruce W. Sheppard 12-2-91  
SIGNATURE DATE

Registration No. 17003

- Land Surveyor,  Professional Engineer
- County Surveyor,  County Engineer

### OFFICE OF THE COUNTY RECORDER

County of MURRAY

I hereby certify that this document was filed in the Co. Recorders office at \_\_\_\_\_ M. on the \_\_\_\_\_ day of \_\_\_\_\_ A.D., 19 \_\_\_\_\_

County Recorder James V. Johnson

By DEC 4 1991, Deputy

DOCUMENT NO. \_\_\_\_\_

North Quarter Corner of Section 7, Township 107 North, Range 39 West

The DNR Bureau of Engineering contacted the following for survey information:

Minnesota Secretary of State's Office  
Murray County Recorder's Office  
Murray County Highway Engineer's Office

- 1861 U.S. General Land Office notes obtained from the Secretary of State's Office show the corner marked with pits and mound.
- 1991 October, DNR Bureau of Engineering hired a backhoe to dig for evidence of a monument at corner. Dug a 7-1/2 foot north-south by 24 foot east-west by 3-1/2 foot deep hole the center being on the center line of an east-west road and in line with a fence south. No evidence of a monument was found. Set a DNR Survey Marker on the center line of the east-west road and in line with the fence south and found it to be:  
2635.85 feet from the northeast corner of Section 7  
2482.04 feet from the northeast corner of Section 12  
1.60 feet south and 9.08 feet east of the computed lost position for corner

Analysis of the above information led the DNR Bureau of Engineering to conclude that the intersection of the center line of the east-west road and fence line south marks the obliterated position of the corner.